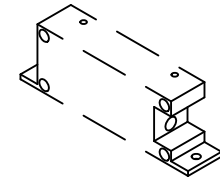
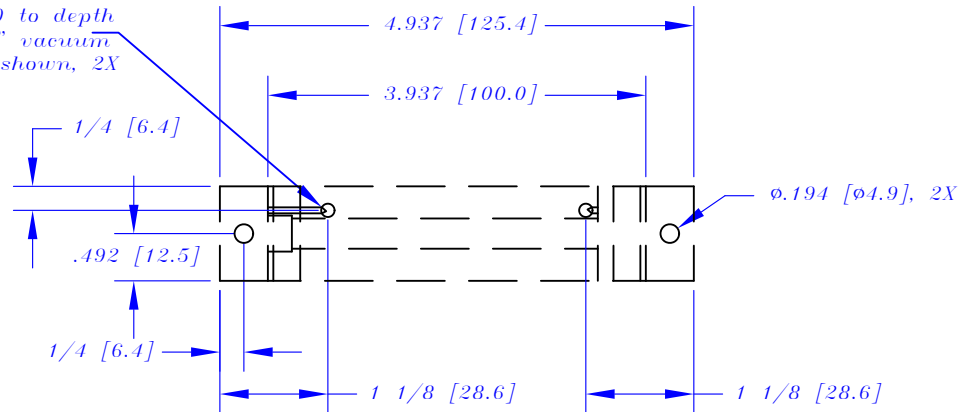
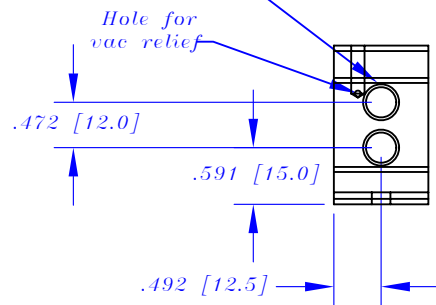


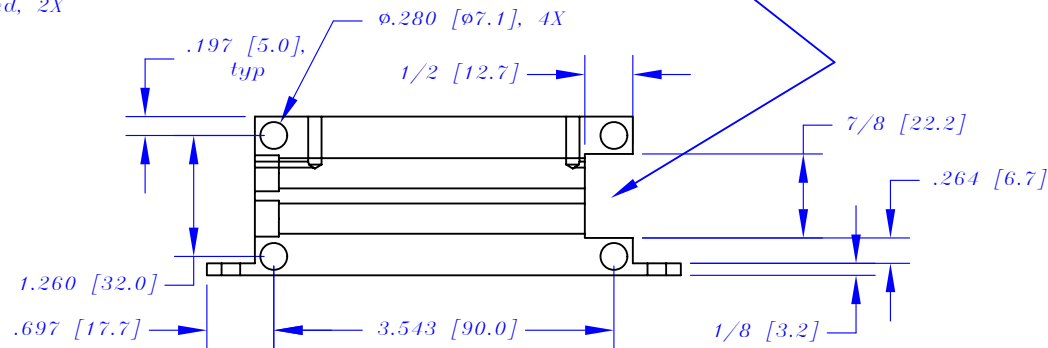
Drill and tap #6-30 to depth of 1/2", Add 1/16" vacuum relief holes at bottom as shown, 2X



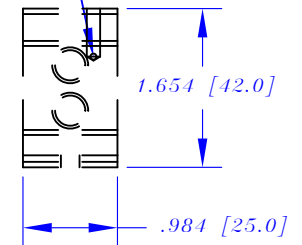
Drill through .00315 (8mm) and c'bore 03/8" to depth of 1/4" for Cu tube to be brazed, 2X




NOTE: Weld plug to be inserted and brazed here

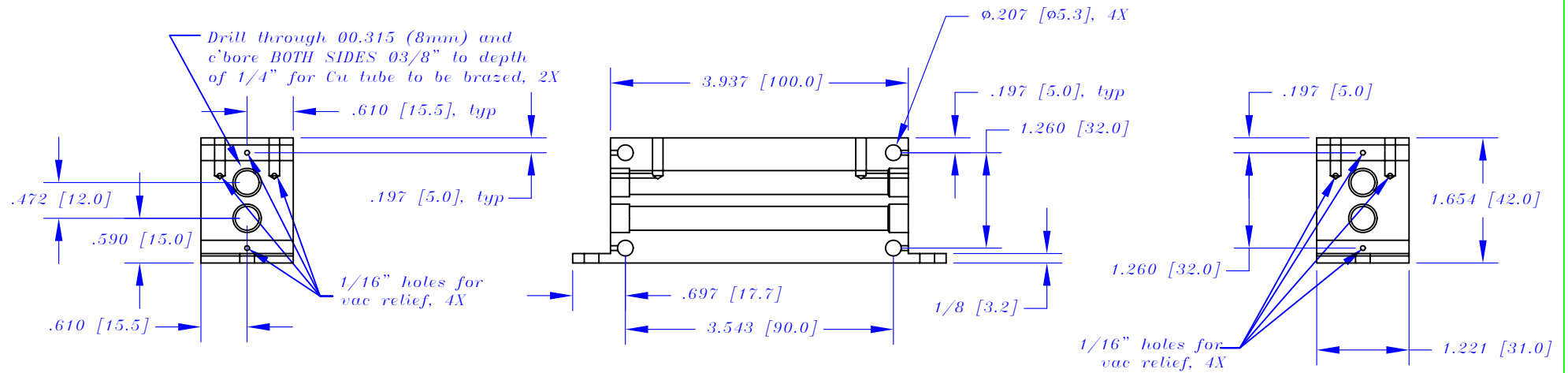
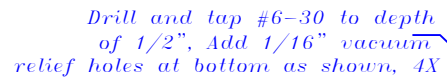



Hole for vac relief

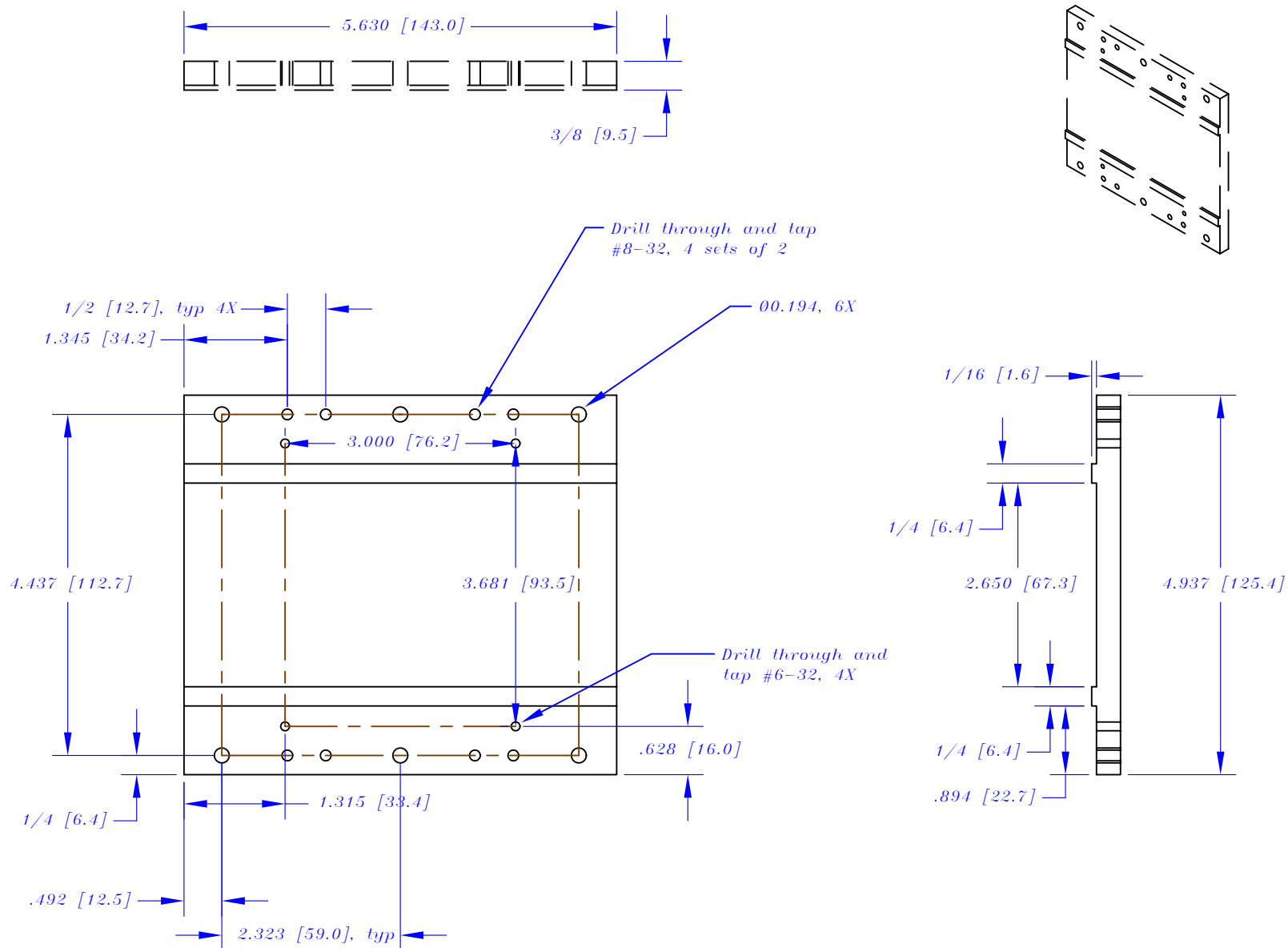



NOTE: Quantity 2

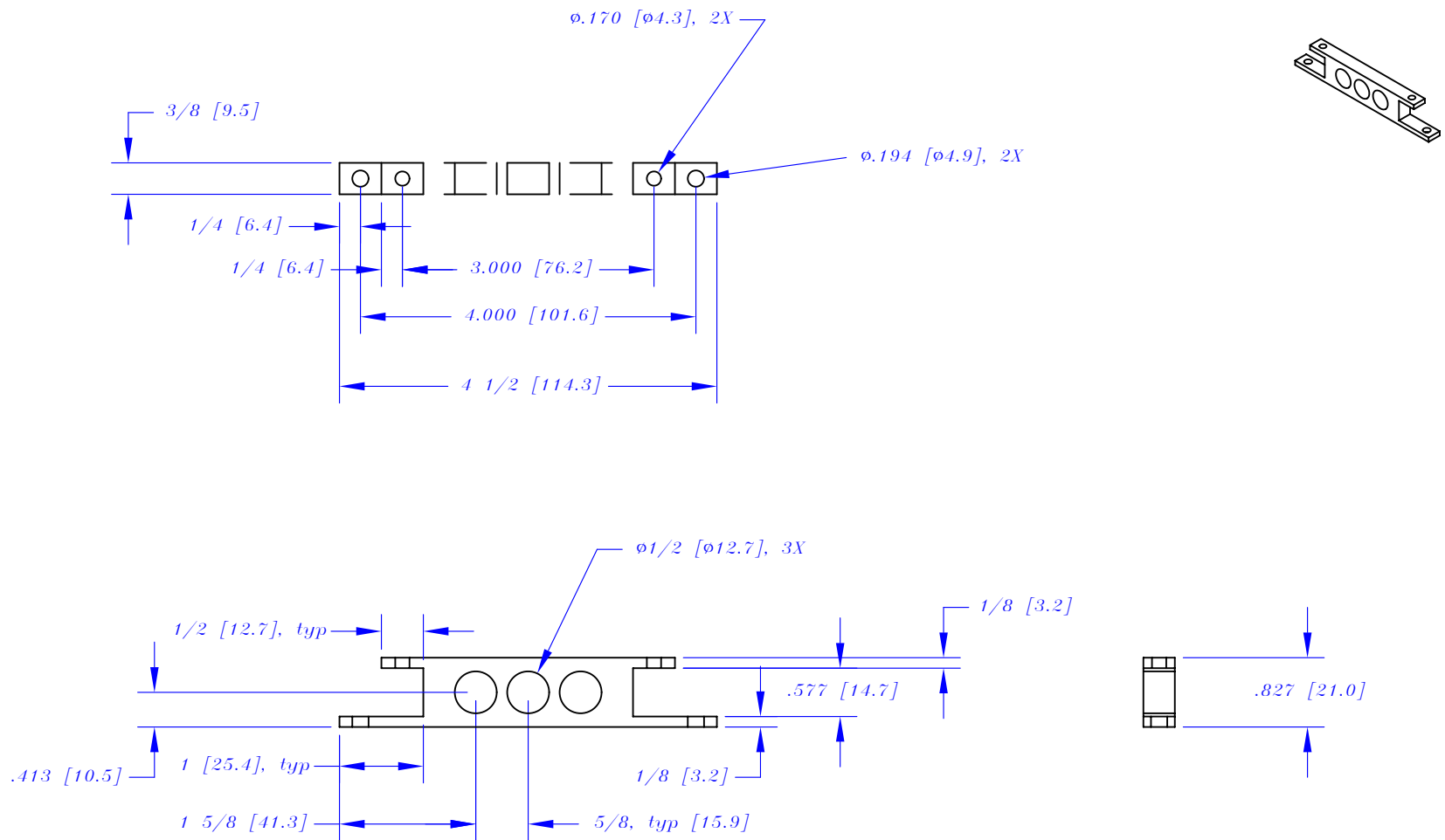
UNLESS OTHERWISE SPEC. TOLERANCES ON				DRAWN BY MICHAEL PAPE		DATE 08/27/04		 UNIVERSITY OF WASHINGTON PACIFIC NORTHWEST CONSORTIUM SEATTLE, WA 98195					
				CHECKED BY									
DECIMALS			ANGLES			TITLE Indirect Cool XTAL Outside Cu Block							
.X ±.100	.XX ±.010	.XXX ±.005	±0°30'										
DIMENSIONS ARE IN ENGLISH X METRIC [MM]				MATERIAL Copper				SCALE 2:1		SIZE A		DRAWING NO. Indirect Cooled Xtal.dwg	




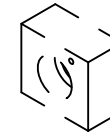
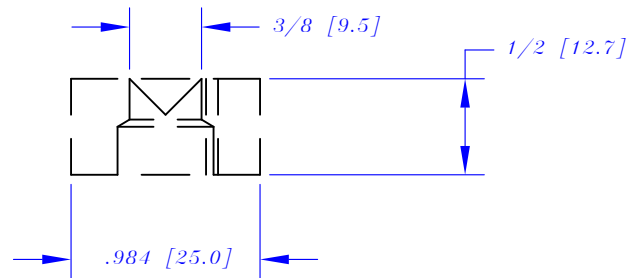
UNLESS OTHERWISE SPEC. TOLERANCES ON				DRAWN BY MICHAEL PAPE		DATE 08/27/04		 <div>UNIVERSITY OF WASHINGTON PACIFIC NORTHWEST CONSORTIUM SEATTLE, WA 98195</div>	
DECIMALS				CHECKED BY					
ANGLES				MATERIAL Copper					
.X ±.100	.XX ±.010	.XXX ±.005	±0°30'						
DIMENSIONS ARE IN ENGLISH X METRIC [MM]				TITLE Indirect Cool XTAL Center Cu Block					
				SCALE 2:1	SIZE A	DRAWING NO. Indirect Cooled Xtal.dwg			



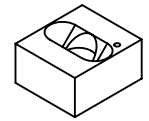
UNLESS OTHERWISE SPEC. TOLERANCES ON				DRAWN BY MICHAEL PAPE	DATE 08/27/04	 UNIVERSITY OF WASHINGTON PACIFIC NORTHWEST CONSORTIUM SEATTLE, WA 98195	
				CHECKED BY			
DECIMALS .X ±.100 .XX ±.010 .XXX ±.005 ANGLES ±0°30'				MATERIAL Titanium		TITLE Indirect Cool XTAL Titanium Base	
DIMENSIONS ARE IN ENGLISH <u>X</u> METRIC [MM]				SCALE 2:1	SIZE A	DRAWING NO. Indirect Cooled Xtal.dwg	



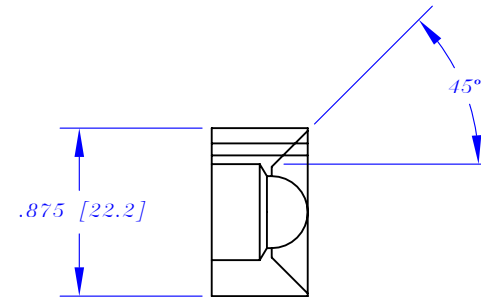
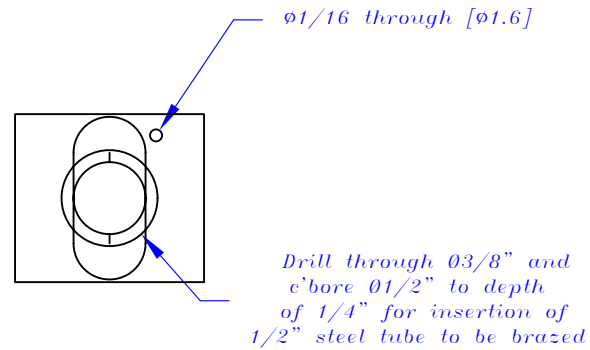
UNLESS OTHERWISE SPEC. TOLERANCES ON				DRAWN BY MICHAEL PAPE	DATE 08/27/04		UNIVERSITY OF WASHINGTON PACIFIC NORTHWEST CONSORTIUM SEATTLE, WA 98195		
				CHECKED BY					
DECIMALS				ANGLES		MATERIAL			
.X ±.100	.XX ±.010	.XXX ±.005	±0°30'		TITLE			Indirect Cool XTAL Macor Pedestal	
DIMENSIONS ARE IN ENGLISH X METRIC [MM]				Macor		SCALE	SIZE	DRAWING NO.	
						2:1	A	Indirect Cooled Xtal.dwg	




Side A



Side B



NOTE: Quantity 2

UNLESS OTHERWISE SPEC. TOLERANCES ON				DRAWN BY MICHAEL PAPE		DATE 08/27/04		 <div>UNIVERSITY OF WASHINGTON PACIFIC NORTHWEST CONSORTIUM SEATTLE, WA 98195</div>			
				CHECKED BY							
DECIMALS				ANGLES							
.X ±.100	.XX ±.010	.XXX ±.005		±0°30'							
DIMENSIONS ARE IN ENGLISH X METRIC [MM]				MATERIAL Copper		TITLE Indirect Cool XTAL Weld Plug					
						SCALE 1:1				SIZE A	